

Impact Report 2025

A Home with a
Heart



WICHITA
Children's Home

Impact Report 2025

7271 E 37th Street N. | Wichita, KS 67226 | WCH.org

A Note From the CEO




Founded in 1888, Wichita Children's Home has been a steady presence for children in crisis, providing care and support. When a local farmer lost his wife in child-birth, our founders stepped in, offering safety, care, and a temporary home for his children. Seeing the need, they extended their help to other children, laying the foundation for a century-long mission: being there for children whenever they need it most.

At Wichita Children's Home, some of the youngest and most vulnerable children come to us after experiencing pain and trauma that no child should ever endure. Little ones, babies, toddlers, and young children, who cannot defend themselves arrive at our doors frightened, hurt, and in need of safety. In those first critical moments, our mission is clear: to surround them with love, stability, and healing.

Thanks to our incredible foster families, we can do just that. Within hours, a child who has known fear can be tucked into bed in a safe home, share dinner around a family table, and laugh while playing fetch with a family dog. These simple moments of childhood, things so many take for granted, become the building blocks of hope and healing. One foster parent recently told us, "It's the little things, bedtime stories, pancakes on Saturday mornings, that begin to restore their trust."

Our foster families are specially trained to support children who have endured trauma. They welcome children with open arms and hearts, while we at WCH walk beside them every step of the way. With 24/7 support, resources, and training, no family is ever alone on this journey. As one of our foster parents shared, "We don't have to have all the answers, WCH is always there when we need them."

As you read this annual report, I invite you to consider your own role in this mission. Perhaps you feel called to become a foster family, or even to be one of those neighbors helping neighbors, stepping in to make a difference in a child's life. Or maybe your support looks different, through volunteering, donating, or sharing our story. However you choose to join us, know that you are helping continue the tradition of neighbors helping neighbors and creating a community where every child has a chance to heal, grow, and thrive.



Board of Trustees

President
Jeff Jamison, IMA, Inc.

Immediate Past President
Stephen Clark II, Clark Investment Group

Treasurer & Finance Co-Chair
Megan Adams, FORVIS

Finance Co-Chair
Jill Wills, Spirit Aerosystems

Secretary & Board Management Chair
Jodi Noah, Textron Aviation

Development Co-Chair
Kim Lett

Development Co-Chair
Jenny Hatchett

Facilities Chair
Joe Tigert, RT Financial

Programs Chair
Rhonda Turner, Axiom Counseling & Therapy

At Large Members

Kim Breitenbach
Marla Zarda Chandler
Tracy Farrell
Brittany French
Julie Gentile
Stacy Hand
Jim Knight
Steph Kochenower
Rhonda Lewis, Ph.D., MPH
Stephanie Luetters
Ely Luna
Melissa Murfin Mangan
Sylvia Orozco-Do, M.D.
Capt. Travis Rakestraw
Kim Rippel
Christi Royse
Cindy Schwan
Kriya Shortt
Jennie Stone
Sean Tarbell
William (Bill) Wise III

Thank You

These are the services you make possible:

24/7 Emergency Care + Emergency Foster Care + Polaris
Emergency Residential Shelter + Street Outreach Services (SOS)
Moving on to Motherhood (MOM) + BRIDGES Apartments + Kidzcope
CrossRoads + Dakhil Safe House + Garver Program + Gerard Program





Foster Families

Foster families are the bridge between crisis & healing, giving children the love and stability they need.

At Wichita Children's Home, our foster families play a vital role in helping children in crisis feel safe, cared for, and loved. We rely on compassionate, trauma-informed families to provide emergency care, long-term placements, and foster-to-adopt opportunities for children ages 0–12.



“I like it here because I don't have to be scared anymore.”

At just 4 years old, Sami loves to sing, play dress-up, and care for her baby brother, but life at home was far from safe. With little food in the house, a mother who worked long hours and turned to drinking, and moments of neglect and abuse, Sami often felt scared, hungry, and alone. When she came to Wichita Children's Home, Sami and her brother found safety, stability, and therapeutic support with one of our foster families. Through their care and the guidance needed to heal, children like Sami are given the chance to simply be children, to play, learn, and grow in a safe and nurturing environment.

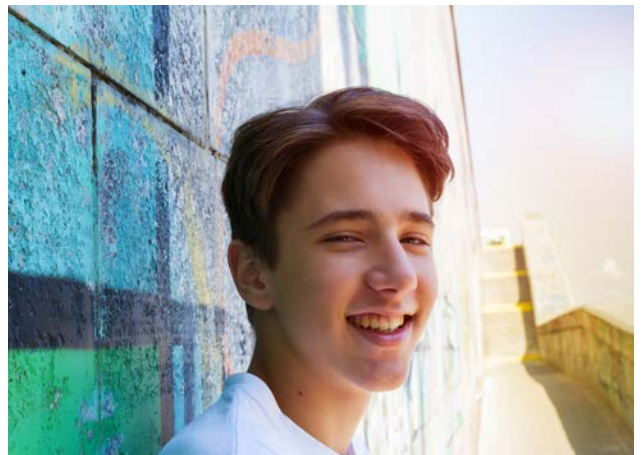
Together, we provide children like Sami with safety and care.

CrossRoads

CrossRoads gives youth in crisis a safe place, supportive adults, and hope for a better tomorrow.

CrossRoads Emergency Shelter and Drop-In Center offers a lifeline to youth in crisis, those who are homeless, have run away, or are vulnerable to trafficking and exploitation. Here, young people find safety, resources, and encouragement to see their worth and begin building a brighter future.

At 18, Nick found himself without a safe place to turn, abused at home, pushed out by his mother, and left to sleep on friends' couches or wander the streets in search of food, shelter, and belonging. Feeling hopeless, angry, and alone, Nick eventually connected with the CrossRoads program at Wichita Children's Home. Through this youth anti-homelessness initiative, he received safe shelter, meals, and the support needed to continue his education, secure housing, and take steps toward employment. Thanks to CrossRoads, Nick is finding stability, healing, and the skills he needs to move forward.



“I feel like I matter.”

Because of your care and compassion, we can continue offering hope and a better path forward for youth like Nick.

Generosity in Action

Kidzcope

Grief is heavy, but at Kidzcope, no one carries it by themselves.

Kidzcope provides no-fee, peer-based bereavement support for children ages 3–18 and their caregivers, helping them navigate the complex emotions that come with loss.

Tyson is 10 years old and struggling to cope after his dad, an athletic man who loved basketball, died suddenly from a heart attack. He no longer wants to go to school or practice and worries constantly about his mom. Tyson doesn't know how to talk about his feelings and wishes he could connect

with someone who understands. Through Kidzcope at Wichita



Children's Home, he found that connection, a place where he can safely share, honor his dad's memory, and begin to heal, reminding us that no child should have to grieve alone.

Thanks to your support, we're able to be there for children like Tyson as they navigate the pain of grief and loss.



"I'm learning that it's okay to feel sad sometimes."

OVER 4,400 Volunteer Hours

That's our community
- our volunteers this year -
proving that every hour truly counts.





Gerard House & MOM

Every baby needs a strong beginning, and every young mom needs someone to walk beside her.

At Gerard House, pregnant and parenting teens find more than just shelter; they discover safety, compassion, and a place to start their journey into motherhood. Gerard House, our residential maternity home for foster youth, offers care, guidance, and resources that promote healthy pregnancies and strong bonds between parents and children.



“I feel like my baby and I finally have a healthy start, and I can be the mom I need to be for my baby.”

Ava was only 16 when her pregnancy upended her world. Without support from her family or the baby’s father, she felt scared and alone until she found her way to Gerard House. There, she received not only a safe place to stay but also encouragement and tools to begin motherhood confidently. Through programs like MOM and the Baby Mobile, Wichita Children’s Home supports young mothers like Ava, helping them nurture their children and build more stable futures.

Because of your generosity, we’re able to offer hope and a healthier start to the young moms like Ava who need it most.

Anti-Human Trafficking

*Trauma from trafficking is real.
But so is the hope; we see it when a survivor takes their first step toward healing.*

Wichita Children’s Home provides a path to safety and healing for youth who have been victims of human trafficking. From immediate safety and stabilization to long-term care and transitional living that fosters independence, survivors are supported every step of the way. At just 14, Paige met someone online who made her feel seen and special, until meeting him turned into a nightmare of control, abuse, and fear. After being trafficked and feeling hopeless about escape, a truck driver’s call to authorities brought her to safety and to the Anti-Human Trafficking programs at Wichita Children’s Home. Here, survivors like Paige begin the long journey of healing with trauma-informed, victim-centered care, finding safety, stability, and the strength to rebuild their lives.



“I’m starting to feel like I can trust people again.”

Your support helps us to be there for survivors like Paige to find hope and healing after unimaginable trauma.

The Scope of WCH

BRIDGES

BRIDGES helps youth gain independence, providing housing, life skills, and the tools to build their future.

BRIDGES Transitional Living provides fully furnished, independent apartments on the Wichita Children's Home campus for youth ages 16–22 who are experiencing homelessness, pregnant or parenting, survivors of human trafficking, or leaving unsafe living environments. Here, young adults gain stability, guidance, and essential life skills to help them take their next steps toward independence.

Elias was in foster care until he turned 18. But three months into his independence, he found himself without stable housing or support, struggling to balance college and work while couch surfing. That changed when a friend connected him with the BRIDGES program at Wichita Children's Home. With help from case managers, Elias developed a plan for his future and gained access to life skills education, mentorship, transportation, and a fully furnished apartment. Today, thanks to the stability and support of BRIDGES, Elias has completed his general education requirements, is working full-time, and is pursuing his college degree. When youth have the confidence and support they need to succeed, so many things are possible.



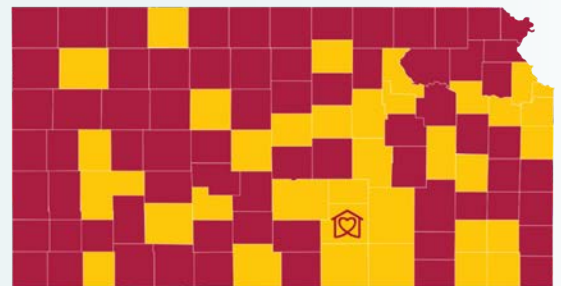
“For the first time in a long time, I feel like there’s a path forward.”

Your support makes programs like this possible, allowing us to give young adults like Elias a foundation to create more hopeful and independent futures.

Last year, the
Wichita Children's Home served

**1,753 youth
from 35 counties**

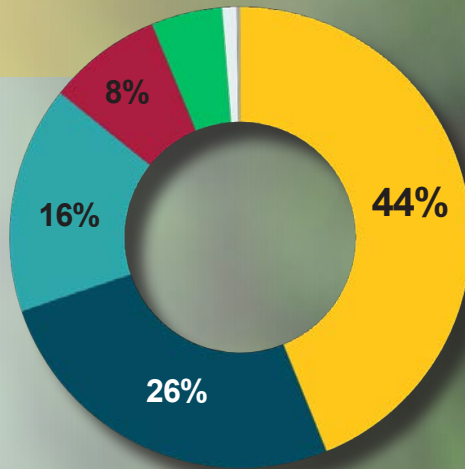
and 91 zip codes, providing
comprehensive care and a safe
place for children and youth in crisis.



The Impact of your donations

Revenue

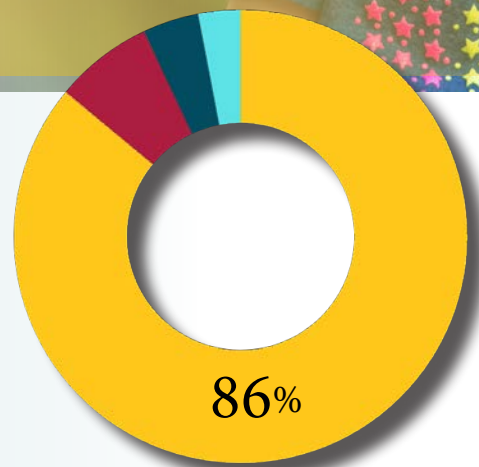
- 44% Contract Fees
- 26% Events
- 16% Contributions
- 8% Government Grants
- 5% Investments
- 1% United Way
- .25% Other Revenue



Expenses

- 86% Programs
- 7% Direct Donor Benefit Cost
- 4% Management & Operations
- 3% Fundraising

*Source Data: FY2024 Audited Financials



86%
of all money goes directly
toward our programs